



# Kelly Creek Flycasters

## Riffles, Runs & Lies



**IMPORTANT ANNOUNCEMENT** – At the September KCF Board Meeting, the Board voted to change the pricing structure of our meeting meals. Effective immediately, the price will be \$10 for members (unchanged) and \$15 for nonmembers (our actual cost). Membership applications will be available at each meeting.

### December 8th Meeting Information

Don't forget our 10/10/10 program for the Christmas meeting. In case you missed it, we want at least **10 members** to submit no more than **10 digital photos** of a recent memorable fishing trip, and be ready to talk about **10 seconds**, more or less, about each photo. Photos can be submitted to Dale Mickelson ([skutch@q.com](mailto:skutch@q.com)) by CD, thumb drive, or email.

### PRESIDENT'S MESSAGE

*By Jim Lowther - Kelly Creek Flycasters President*

First I'd like to thank our scholarship committee for a difficult job well done. Dave Eberle chaired the committee, which included Peg Kingery, Gary Evers, Dave Clark, R.J. Webb, and Joe Douglas. From seven applicants they chose an excellent student who will be announced on December 8. I'm sure they all felt, as I did last year, that every applicant deserved an award. You will have the opportunity to meet our scholar and see a short power point presentation at the meeting.

We're entering that time of year when it's tough to go fishing. Days are short, both fish and fisherman are sluggish, and sometimes my line freezes into the little ice balls that form on the guides. The old phrase, "fish or cut bait," comes to mind, but for us that amounts to replenishing the stock of flies we decimated last season.



## Kelly Creek Flycasters – December 2011

The other option is travel to where it isn't winter. Mexico and Chile start to sound pretty good right now, but I think I'll plug away at steelhead for a while longer.

And it's time to get busy planning NIFFE. Just like replenishing the stock of flies, NIFFE (<http://www.NIFFE.org>) is necessary for replenishing the club's finances. It's a lot of work for a few people, and could be less so if everybody grabbed a corner and pulled. So as we work our way toward March 2012, don't wait for someone to ask you to help. As Nike advertises, "Just do it!"

I hope you have had a good Thanksgiving holiday. You won't want to miss our December meeting when we try a new idea in programs. Remember that there'll also be prizes. And if you haven't sent Dale ([Skutch@q.com](mailto:Skutch@q.com)) your ten pictures, it's not too late.

## \$ & ¢

### KELLY CREEK FLYCASTERS TREASURER'S "UNOFFICIAL" REPORT

Certificate of Deposit	\$10,020.18
Checking Account	<u>\$ 1,561.07</u>
Total	\$11,581.25

### 2011 EVENT SCHEDULE

December 6, 2011	1st Tuesday, Board Meeting, 5:30pm Location will be announced. Members are welcome.
December 8, 2011	Christmas Party and Meeting, 7:00, Quality Inn





## Kelly Creek Flycasters – December 2011

### *NIFFE 2012 – March 23 and 24 with Charles Jardine*

**We NEED your HELP!** If you are interested in assisting with NIFFE 2012 call/email our NIFFE Chair, Charlene Douglas, at 208.476.7405, [charlene.douglas@desire2learn.com](mailto:charlene.douglas@desire2learn.com) or any members of your NIFFE 2012 Committee (Peg Kingery, Bob Long, Joe Douglas, Will Godfrey, Dale and Lora Mickelson and Trisha Campbell). It takes a village to raise a child.....it takes an entire Club to put on a successful NIFFE!



### Kelly Creek Flycasters Board of Directors

KCF Board Member	Positions	Term Exp	E-Mail Address	Phone Number
James Lowther	<b>President</b>	2012	<a href="mailto:jimlowther@yahoo.com">jimlowther@yahoo.com</a>	(509) 243-1775
Joe Douglas	<b>Vice-President</b>	2013	<a href="mailto:joe@blackdogtackle.com">joe@blackdogtackle.com</a>	(208) 476-5708
Jeanie Centenari	<b>Treasurer</b>	2011	<a href="mailto:jeanie.centenari@gmail.com">jeanie.centenari@gmail.com</a>	(208) 791-5474
Peg Kingery	<b>Secretary</b>	2011	<a href="mailto:pkingery@vandals.uidaho.edu">pkingery@vandals.uidaho.edu</a>	
Trisha Campbell	Board Member	2013	<a href="mailto:22seaotter@cableone.net">22seaotter@cableone.net</a>	
Dave Clark	Board Member	2011	<a href="mailto:daveclark@cableone.net">daveclark@cableone.net</a>	(509) 751-1266
Dale Mickelson	Board Member	2012	<a href="mailto:skutch@q.com">skutch@q.com</a>	(208) 743-9649
Lora Mickelson	Board Member	2012	<a href="mailto:Lorajm45@q.com">Lorajm45@q.com</a>	(208) 743-9649
Will Godfrey	Board Member	2013	<a href="mailto:wgodfrey@cableone.net">wgodfrey@cableone.net</a>	(208) 798-5424



## Kelly Creek Flycasters – December 2011

---

### New Board Member Election – Make sure you cast your vote!

At the monthly meeting on November 10, the following members were nominated for the three open positions on the board of directors:

Dave Eberle  
Bob Long  
Skip Shaw

One other nominee respectfully withdrew her name from consideration, but indicated she will serve at some time in the future when her life is less complicated.

Please send an email to Peg Kingery ([pkingery@vandals.uidaho.edu](mailto:pkingery@vandals.uidaho.edu)) with "KCF Ballot" as the subject line, and vote. You have three individual votes. For simplicity you may say, "all three" if that is your choice.

### TYING CORNER – Jarvis Bug

*Tied by Mark Lamb, Recorded by Jim Lowther*



Now that all the rivers are cooling down a lot, it is probably time to fish deeper. My neighbor Jim Jarvis, previously from the Deschutes area of Oregon, has used several variations of this weighted bug on the Grand Ronde. Amazingly, Jim doesn't tie, so he has Mark Lamb at The Traditional Sportsman in Lewiston produce batches of these which he can share with fishing partners and friends. That's why Mark refers to it as the Jarvis Bug.

When Jim first showed me one it sported a heavy red bead head and an up eye hook. That fished well enough, but the present design is an improvement. The down eye and weight above the shank gives it a tendency to turn over in the water. It should have less chance to hook the bottom. Whatever you do when fishing a fly like this, keep it away from your graphite rod. My favorite Spey rod is in the Bainbridge Rod Hospital right now.



## Kelly Creek Flycasters – December 2011

---

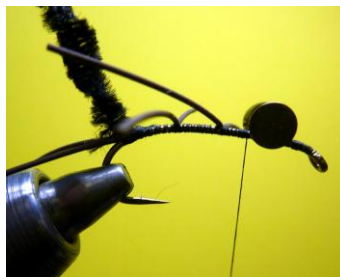
**Hook:** Daiichi #1760, size 4 (a down eye, curved shank)  
**Thread:** 6/0 Black  
**Weight:** 7/32 Black Nickel Barbell  
**Head:** Chenille, fluorescent pink  
**Body:** Chenille, black  
**Legs/Tail:** Black Rubber Leg material

### Tying Directions:

1. Pinch the barb and dress the hook with 6/0 tying thread about 1/4 distance behind the eye. Tying commercially, Mark does not pinch barbs, but that doesn't mean we shouldn't.
2. Tie in the barbell with a criss-cross wrap followed by a horizontal wrap under the barbell and over the hook. Wrap tightly with plenty of thread.
3. Dress the tying thread back to even with the barb and tie in about 1 1/2" of rubber leg doubled.



4. Strip off about 1/4" of the chenille fibers and tie in the core
5. Wrap forward to even with the point and tie in a length of rubber leg crosswise. Start with a soft loop, then criss-cross tightly.
6. Wrap further forward half way between those legs and the barbell, and tie in another length of rubber leg similarly.

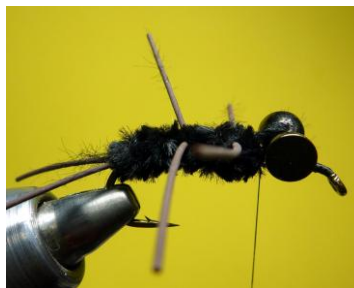


7. Wrap the black chenille forward, keeping wraps close together to make a bulky body. Wrap close to the rubber legs so they protrude perpendicular to the body. Continue forward to just behind the barbell and tie off.



## Kelly Creek Flycasters – December 2011

---



8. Strip off about 1/4" of the fuzz from a length of pink chenille and tie it in behind the barbell. Wrap tying thread forward. Wrap the chenille to produce a bulky head. Criss-cross the barbell head, then wrap around each side.. This takes about five wraps of chenille to cover completely. Tie off and make a neat head.



### Corporate Members (be sure to visit our corporate members)

#### **Red Shed Fly Shop**

**Mike and Linda Cummins**

**20652 Big Canyon Road**

**Peck, Idaho 83545 USA**

**208-486-6098 shop phone; 208-486-7023 Fax**

**[www.redshedflyshop.com](http://www.redshedflyshop.com)**

---

Riffles, Runs & Lies is edited by Charlene Douglas on behalf of the Kelly Creek Flycasters. All club members are welcome to submit articles for inclusion into the club newsletter by contacting Charlene at [kcfnewsletter@gmail.com](mailto:kcfnewsletter@gmail.com) or by phone at (208) 476-7405.